

FUZYPRO Data Loggers

Data loggers for:

- Temperature
- Humidity
- Pressure
- pH
- Level
- Shock/ Vibration
- Pulse/ Event
- Voltage
- Current
- Multi-parameter

Features:

- N.I.S.T. Traceable**
- Real-Time Operation**
- Low cost**
- Programmable Start-Time**
- Reuseable**
- User Friendly**

FZTC - Thermocouple Recorder



The FZTC is a miniature, battery powered, stand alone, thermocouple based temperature recorder. This is an all-in-one compact, portable, easy to use device that will measure and record up to 16,383 measurements per channel. The storage medium is non-volatile solid state memory, providing maximum data security even if the battery becomes discharged. The device can be started and stopped directly from your computer and its small size allows it to fit almost anywhere. the FZTC makes data retrieval quick and easy. Simply plug it into an empty com port and our user-friendly software does the rest.

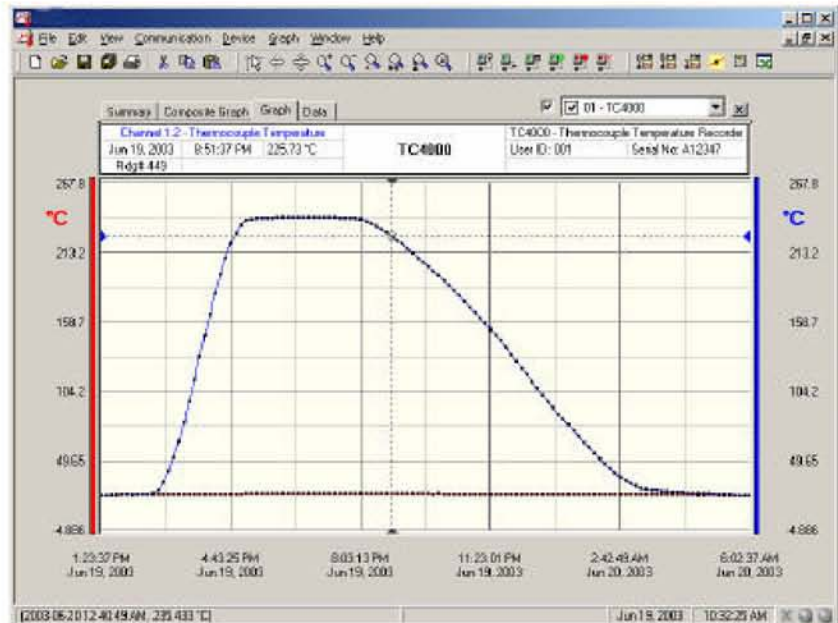
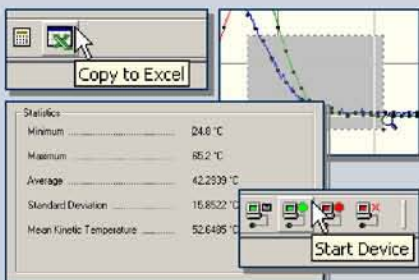
Also available in 1, 4 and 8 channel models

Applications:

Extreme temperature monitoring, warehouse monitoring, HVAC, Medical, Pharmaceutical, Oven profiling, museum monitoring, environmental studies, Replace costly strip chart recorders, Implement HACCP Programs.

SOFTWARE

FUZYPRO Data Recorder Software is an easy to use Windows-based software package that allows the user to effortlessly collect, display and analyze data. A variety of powerful tools allow you to examine, export, and print professional looking data with just a click of the mouse.



FZRTDTEMP - RTD Temperature Recorder



The FZRTDTEMP is a miniature, battery powered, stand alone, precision temperature recorder. This device will record up to 21,845 measurements per channel. Applications: Calibration chamber monitor, warehouse monitor, HVAC, Medical/ Pharmaceutical.

FZPRTEMP - Pressure/ Temperature Recorder



The FZPRTEMP is a battery powered, stand alone pressure and temperature data logger. This device records up to 16,383 pressure and 16,383 temperature measurements. This device accommodates numerous adaptors for various pressure ranges and pipe fittings. Applications: Pneumatics, process control system, gas compressors, lubrication systems, chemical processing, pulp and paper processing, medical instrumentation

FZPHTEMP - PH/ Temperature Recorder



The FZPHTEMP is a miniature, battery powered, stand alone pH and temperature recorder. This device can record up to 13,107 measurements per channel. Applications: Surface/ groundwater monitoring, process water quality, pulp and paper industry.

FZBRIDGE - Bridge/ Strain Gauge Recorder



The FZBRIDGE is a miniature, battery powered, stand alone, bridge/ strain gauge recorder. The FZBRIDGE features a real-time clock module that extends battery life to > 10 years and allows high speed downloads. Application: Strain Gauge, load cells, torque sensor, load bolts, position transducer.

FUZ8TC - 8 Channel Thermocouple Recorder



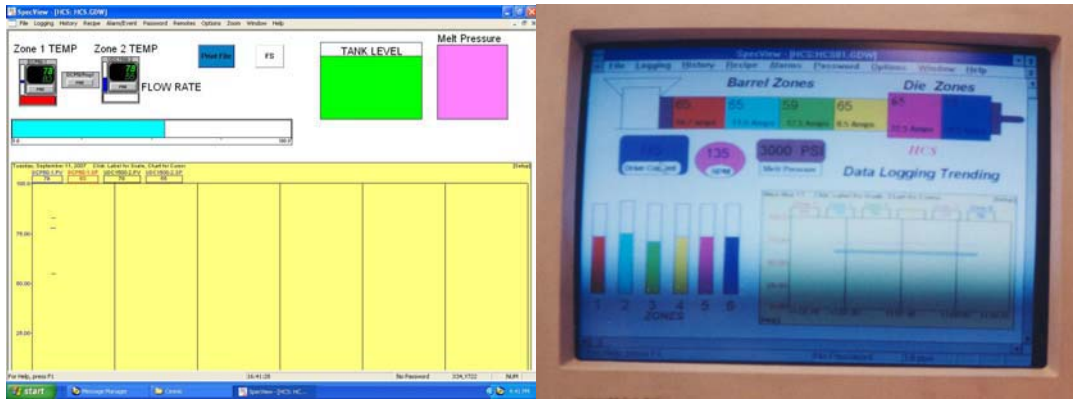
The FUZ8TC is an eight channel, battery powered, stand alone thermocouple recorder. This device will record up to 14,563 measurements per channel. Applications: Record temperature of perishable goods in transit, warehouse monitoring, HVAC, Medical.

FZLEVEL2000 - Vented Water Level/ Temperature Recorder



The FZLEVEL2000 is a battery powered, stand alone, vented submersible water level and temperature recorder. This is an all-in-one compact, portable, easy to use device that will measure and record up to 16,383 measurements per channel.

Applications: Water level monitoring, environmental studies, waste water treatment, flood analysis, groundwater monitoring, irrigation canals, lake and wetland studies, stormwater studies, landfill/hazardous site analysis.



FUZYPRO Multi Spec View is a complete configuration and data acquisition package for FUZYPRO controllers.

Configurable data save, real time trends, alarm log, digital values, bar graphs and more! Up to 64 units can be connected. Complete project setups can be saved or loaded to eliminate time consuming setup tasks during product or system changes.

The built-in data viewer allows the user to view any data file in a spreadsheet format without leaving the program. Plotting historical data is as easy as selecting cells and pressing the "plot" button.

Multi view supports all controllers & MODMUX Modules 256 points

Windows 95 Win98, NT4.0, XP Professional 2000 & VISTA supported

Real Time Data Acquisition And Control Features:

- Operator Lockout 5 levels
- High Speed 9600 Baud 2 Way Communication
- Total Custom Graphics Using GDW With Historic Replay At Various Speeds
- Multiple Graphic Displays To Represent All Parameters Bar Graph, Chart Digital or Alpha Numerical Representation
- Automatically Detects Connected Devices - No Tag List To Define
- Automatically Creates A Screen On "Instrument Views"
- Automatically Builds a List box Data Base Of All Instrument Parameters
- Same Buttons On Instrument Views As On Instruments
- Multi-Pen Trend Charts Time Scales From 1 Minute to 48 Hours
- Easy Graphic Tools for Custom Screens Including Bitmap Import And OLE
- Flexible Recipe system With Long recipe Names And "Snapshot" Feature
- Data Logging Of Any Instrument Parameter Automatic Trend Chart Printing
- Log Reports In CSV (comma separated variable) Format For Easy Spreadsheet Import
- Many Protocols simultaneously
- Up to 9 Simultaneous Communications Ports
- User Definable Report Structure
- Alarm Monitoring And Time Stamping
- Event Logging for Tracking User Operations
- Flexible Password Scheme
- Reassign And Re-Scale Of Trend Chart Pens And Time Axis
- Printing - Snapshot A Screen to a Full Size Colour Print Out, Including Trends
- Dynamic Data Exchange (DDE) - Link Live Data from Connected Instruments to Other Programs Such As Excel or SPC Package
- Historical Replay Of Graphical Screens From Logged Data

60- Meg Dr Unit 13 London Ont N6E 3T6 Ph (519) 686 2715

Email : hcs@hcs77.com Web: www.hcs77.com Fax (519) 686 8159

MODEL	DESCRIPTION
	MODULES
MM8DI	8 DIGITAL INPUT MODULE
MM8DIB	8 DIGITAL INPUT MODULE WITH BATTERY BACKED COUNTERS
MM16DI	16 DIGITAL INPUT MODULE
MM8DO	8 DIGITAL OUTPUT MODULE
MM4DIO	4 DIGITAL INPUT / 4 DIGITAL OUTPUT
MM8DIO	8 DIGITAL INPUT / 8 DIGITAL OUTPUT
MM4RO	4 RELAY OUTPUT MODULE
MM8AI/V	8 ANALOG INPUT 0-5V / 1-5V / 0-10V / 2-10V
MM8AI/V ISO	8 ANALOG INPUT 0-5V / 1-5V / 0-10V / 2-10V ISOLATED
MM8AI/I	8 ANALOG INPUT 0-20mA / 4-20mA
MM8AI/I ISO	8 ANALOG INPUT 0-20mA / 4-20mA FULLY ISOLATED
MM8AO	8 ANALOG OUTPUT 0-20mA
MM8VO	8 ANALOG OUTPUT 0-10V
MM8TC	8 THERMOCOUPLE INPUT MODULE
MM8TCISO	8 TC INPUT MODULE INCL. 0 - 50mV I/P FULLY ISOLATED
MM8MVISO	8 MV INPUT MODULE (-10mV to +100mV) I/P FULLY ISOLATED
MM6RTD	6 RTD INPUT MODULE PT100, Ni120
MM6RTDB	6 RTD INPUT MODULE PT1000
MM1TI2RO	1 TEMPERATURE INPUT TC / RTD WITH DUAL ALARMS
MMEM	MEMORY MODULE
	COMMUNICATION MODULES
MMINTCONV	RS232 / RS485 INTELLIGENT CONVERTER
MMINTBCONV	RS232 / RS485 INTELLIGENT BOXED CONVERTER
MMDUALCONV	DUAL MASTER RS232 / RS485 INTELLIGENT BOXED CONVERTER
MM485REP	RS485 REPEATER
MM232OPTO/SMA	RS232 / FIBRE OPTIC CONVERTER WITH SMA CONNECTOR 850nm
MM485OPTO/SMA	RS485 / FIBRE OPTIC CONVERTER WITH SMA CONNECTOR 850nm
MMI/OMAP	I/O MAPPER
	DISPLAYS
UCLK6A	UNIVERSAL CLOCK 57mm DISPLAY
UCNTR6A	UNIVERSAL 6 DIGIT COUNTER 57mm DISPLAY
UDISP6A	UNIVERSAL 6 DIGIT DISPLAY 57mm DISPLAY
UCLK6LA	UNIVERSAL CLOCK 100mm DISPLAY
UCNTR6LA	UNIVERSAL 6 DIGIT COUNTER 100mm DISPLAY
UDISP6LA	UNIVERSAL 6 DIGIT DISPLAY 100mm DISPLAY
	MISC
MM-LPI	LOOP POWERED ISOLATOR 4 - 20 mA
MM232/485CONV	RS232/RS485(422) ISOLATED CONVERTER
DU01	DIAGNOSTIC UNIT - Large
DU02	DIAGNOSTIC UNIT - Small
	MODBUS TCP MODULES
MMTCP16DI	16 DIGITAL INPUT MODULE WITH 8 COUNTERS
MMTCP16DO	16 DIGITAL OUTPUT MODULE
MMTCP8DIO	8 DIGITAL INPUT / 8 DIGITAL OUTPUT
MMTCP8AI/V	8 ANALOG INPUT 0-5V / 1-5V / 0-10V / 2-10V
MMTCP8AI/I	8 ANALOG INPUT 0-20mA / 4-20mA
MMTCP8AO	8 ANALOG OUTPUT 0-20mA
MMTCP8VO	8 ANALOG OUTPUT 0-10V
MMTCP8TC	8 THERMOCOUPLE INPUT MODULE
MMTCP8TCISO	8 TC INPUT MODULE INCL. 0 - 50mV I/P FULLY ISOLATED
MMTCP6RTD	6 RTD INPUT MODULE PT100, Ni120
MMTCP6RTDB	6 RTD INPUT MODULE PT1000, Ni1000-DIN
MMTCPCONV	MODBUS TCP / RS485 CONVERTER

HCS Heaters Controls & Sensors Ltd HCS



The FZY 5000 is a circular chart recorder like no other.

Programmable alarm options combined with ease of setup provide the flexibility required for multiple recording applications.

The ink style FZY 5000 is the first recorder to self document setup configurations and can operate using standard or competitive charts, another first in the industry. Eliminate multi vendor chart inventories while reducing operator confusion.

Protect your process with the FZY 5000 battery backup option, which provides continuous recording for up to 48 hours in the event of power loss .

The thermal print version offers a single chart inventory for all of your recording needs.

Print your own chart technology includes real time trend and digital data directly on your historical records.

No more confusion when replacing charts. The FZY 5000 the right choice for recording.

No Dip switches for configuration No Manual required for setup

Latching or non latching relays

Self documents setup configuration

Ink or print your own chart style

Ink cartridge or thermal printing

Uses standard or competitive charts

Up to 48hrs of recording during power loss

Latching or Non-latching relays UL, CUL, CE

SPECIFICATIONS :

Power Line Voltage: 110/220VAC, 50/60Hz

Power Consumption: 15VA maximum

Input Thermocouple (T/C):Type J, K, T, R, B, S,RTD: PT100 ohm RTD (385curve) Linear :4-20mA, 1-5VDC, 0-5VDC Range: Per table in manual

Common Mode Rejection:> 120dB at 60Hz Cold Junction Accuracy : $\pm 0.2^{\circ}\text{C}$ @ 25°C

Ambient Error : $\pm 0.01\%$ span $^{\circ}\text{C}$ from 25°C ambient

Isolation inputs share common ground on 2 pen units

Input Impedance : Linear = 249 ohm/ TC = 470K ohm

Recording Chart Size : 10 "

Recording Accuracy : $\pm 0.5\%$ of span (100division span)

Sensor Break : Full scale Pen <10 seconds

Chart Speed : Configurable

Input Filtering : Programmable up to 120 seconds

Process Display Option Red LED , 4 digit, .0,40

Options Relay : DPDT , 1.0Amps @ 120VAC resistive Relay

Program: Process, Band, Non-latching, Latching

Error Protection: De-energized during sensor break.

Hysteresis : Set at 2units, activation is safe sided

Battery Back up: Ink Style: Up to 48hours of recording (optional)

Thermal print style : Maintains real time clock only

Environmental and Physical Operating Temperature:0to 60°C

Storage Temperature : -40 to 65°C Humidity:0-90% RH (non-condensing)

Vibration : 0.3 to 100 Hz @ 0.2 g

Mounting : ± 20 degrees of vertical ± 10 degrees of horizontal

Mouldings : Fire retardant Noryl w/acrylic window

Panel Rating : Nema 3 std (Nema 4 option)

Dimensions :14.0 (H) x 14.0 (W) x 3.8 (D) 7 pounds maximum

www.hcs77.com 60- Meg Dr Unit 13 London Ont

N6E 3T6Ph (519) 686 2715 Fax (519) 686 8159

STOCK LIST RECORDERS & DATA LOGGERS

Description	Size Inches	Accuracy	Range	resolution	NIST CERT	Memory	Model
TEMP RETRIVER	.6X1.4X2.2	0.5 C	- 40 to 80 C	0.1	YES	16 383	TEMPRET
Mini temp recorder	.6X1.4X2.2	0.1 C	- 40 to 80 C	0.1	YES	32 767	FUZ 101
RTD temp recorder	.6X1.4X2.2	0.05 C	- 100 to 600 C	0.01	YES	21 845	FUZ 101 RTD
TC temp recorder	.6X1.4X2.2	0.5 C	TC Range	0.1	YES	16 383	FUZ 4000
TC 10 Yr recorder	.6X1.4X2.2	0.5 C	TC Range	0.1	YES	16 383	FUZ 4000 10
mA Process recorder	.6X1.4X2.2	0.5 C	- 0 – 20	0.1	YES	16 383	FUZ mA
VDC Recorder	.6X1.4X2.2	0.5 C	TC Range	0.1	YES	16 383	FUZ VDC
RH & Temp recorder	.6X1.4X2.2	0.5 C	TC Range	0.1	YES	16 383	FUZ RHT
Pressure recorder	.6X1.4X2.2	0.5 C	TC Range	0.1	YES	16 383	FUZ PRT
4 Zone TC recorder	3.5X4.4X1.0	0.5 C	TC Range	0.1	YES	26 214	FUZ 4 TC
4 Zone RTD recorder	3.5X4.4X1.0	0.5 C	TC Range	0.1	YES	26 214	FUZ 4 RTD
4 zone mA recorder	3.5X4.4X1.0	0.5 C	TC Range	0.1	YES	16 383	FUZ 4 mA
4 Zone VDC recorder	3.5X4.4X1.0	0.5 C	TC Range	0.1	YES	16 383	FUZ 4 VDC
4 Zone state recorder	3.5X4.4X1.0	0.5 C	TC Range	0.1	YES	16 383	FUZ 4 SR
8 Zone TC recorder	3.5X4.4X1.5	0.5 C	TC Range	0.1	YES	26 214	FUZ 8 TC
8 Zone RTD recorder	3.5X4.4X1.5	0.5 C	TC Range	0.1	YES	26 214	FUZ 8 RTD
8 zone mA recorder	3.5X4.4X1.5	0.5 C	TC Range	0.1	YES	16 383	FUZ 8 mA
8 Zone VDC recorder	3.5X4.4X1.0	0.5 C	TC Range	0.1	YES	16 383	FUZ 8 DC
8 Zone State recorder	3.5X4.4X1.0	0.5 C	TC Range	0.1	YES	16 383	FUZ 4000SR
10 " CHART DATA Logger Pen Style 2 PENS Universal INPUT DIGITAL READ out							5000